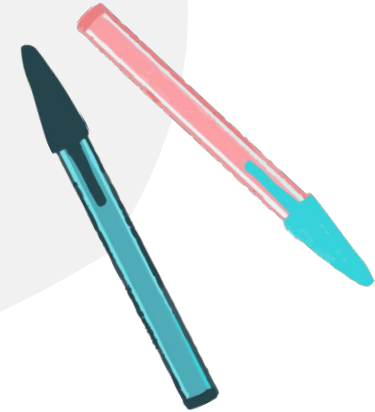
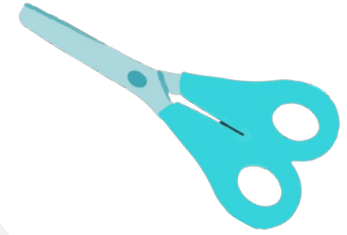


# Accelerated Reading (AR)



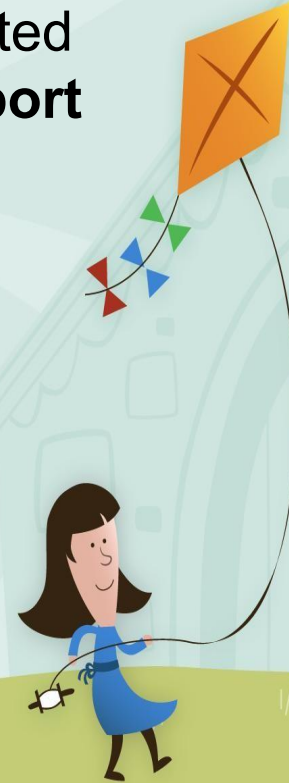
P4 - P7

2022/23



# Our aims

- Build an understanding of how Accelerated Reader (A.R.) is used as **a tool to support reading**
- Understand ways that you can **support learning at home**



# What is Accelerated Reader?

## In a Nutshell...

- Every pupil completes a **STAR assessment** which provides a reading range called a '**ZPD**'. This happens **at least once a term**.
- A pupil **chooses a book to read within their ZPD**
- Once a pupil has read a book, they take **an online quiz** which gives them **immediate feedback**
- Pupils respond to **regular feedback** and are **motivated to make progress** with their reading skills



# What is Accelerated Reader?

## **Valuable data**

A.R. gives teachers the information they need to monitor pupil's reading practice and make informed decisions to guide their future learning.

## **Motivational quizzes**

Because pupils receive regular feedback from A.R., teachers are given many opportunities to praise pupils for their successes and to discuss with them what they have been reading.

## **Appropriate challenge**

Pupils develop reading skills most effectively when they read appropriately challenging books – difficult enough to keep them engaged but not so difficult that they become frustrated. *This is their 'Zone of Proximal Development' (ZPD).*



# What is Accelerated Reader?

## Extensive choice

- A.R. provides pupils with a greater choice of levelled books and quizzes than any comparable reading programme.
- Over 31,000 reading practice quizzes are available on books from over 300 publishers.
- A.R. ensures that there are plenty of books to interest every reader available on the programme.

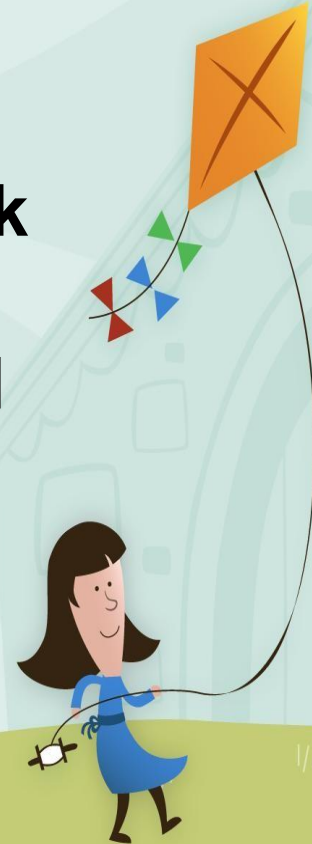
## Best practices

The importance of daily personalised reading practice cannot be overstated. Recent studies indicate that when pupils spend 25 minutes a day reading *suitably challenging books* which they successfully comprehend (demonstrated by achieving 90% or more on the reading practice quiz), then they will achieve optimal reading age growth. This is the power of personalised practice.



# How does Accelerated Reader fit with Curriculum for Excellence?

- Built in to the curriculum
- Skills for life, learning and work
- Independent learners who take responsibility for progress and success



# What does A.R. look like in the classroom?

- Every pupil completes a STAR assessment which provides a reading range (ZPD) – once a term. *We do not usually ask learners to repeat a STAR assessment more than once a term as we are mindful that this is a snapshot of each pupil as a reader and professional judgement is used to guide and support pupils to make appropriate progress. This also avoids placing unnecessary pressure on learners to ‘perform’ under assessment conditions.*
- Class Teachers (CT) and pupils have 1:1 conversations to provide feedback and, where appropriate, set targets.
- In consultation with the CT, pupils select a text within their ZPD, being mindful of the range of genre/fiction vs non-fiction texts available.



# What does A.R. look like in the classroom?

- Pupils read their chosen text independently/with a peer/with an adult, for 20-30 minutes in class every day, depending on the age and stage of the class.
- During this 20-30 minute session, CTs will, where possible, spend time 1:1 with pupils to discuss progress with A.R.
- Once a pupil has read the text (sometimes more than once!), they will undertake a quiz on a device  
<http://www.renlearn.co.uk/accelerated-reader/sample-quizzes/>
- On completion of their reading practice quiz, pupils check-in with their CT to discuss progress, understanding and next steps





# What data is available to Class Teachers and pupils?

- List of texts read and quiz scores
- Average percent for quiz performance
- Reading age
- Scaled score
- Word count
- Growth report (where we can visually track and monitor progress)



# Why is the ZPD range so important?

The Zone of Proximal Development (**ZPD**) defines the readability range within which pupils should read to best develop their **reading**, while avoiding frustration.

ZPD is individually generated as a result of performance in each STAR assessment.



# What does your ZPD mean?

## BELOW ZPD Comfort Zone



- This is an easier read, perfect for reading at home or on holiday
- Maybe it's part of a series you enjoy or is by an author you really like
- Ask your teacher first

## LOWER ZPD Exploration Zone



- Go wild and try something new!
- Explore new genres, authors and book lengths
- Challenge yourself if you can

## UPPER ZPD Deep Dive



- Plan ahead:
- ✓ Choose a book you are excited about
  - ✓ Pick a shorter book first
  - ✓ Make notes as you read – remember the 5Ws!
  - ✓ Ask your teacher for advice

## ABOVE ZPD Read Together



- This is a challenging read
- Who would enjoy reading this book with you?
  - A parent?
  - An older sibling?
  - A friend?
- Ask your teacher first

### Zone of Proximal Development (ZPD)

The Zone of Proximal Development (ZPD) defines the readability range within which pupils should read to best develop their reading, while avoiding frustration. The ZPD is especially useful for pupils using Renaissance Accelerated Reader, which lists readability levels for all quizzed books. However, success at any difficulty also depends on a student's interest in a book, and knowledge of its content.

# A.R. and Reading for Enjoyment – what is the difference?

- At Burnbrae PS, we would never ‘stop’ a child from choosing to read a book that they are interested in
- If it is out with their ZPD range, we will encourage them to read the text for enjoyment instead, either in school or at home
- Your child may be reading a 2.6 in school as guided by their ZPD, but may be interested in reading a text at 4.7 – however it is important that during their protected 20-30 minutes of A.R. time in class, they are reading and engaging with an appropriate A.R. text.



# How Can I Help My Child at Home?

- Encourage your child to read/engage with texts for at least 20 minutes at home each day
- Discuss books, texts, etc. and ask questions about what your child has read
- Model reading aloud on a regular basis
- Use AR Book Finder ([www.arbookfind.co.uk](http://www.arbookfind.co.uk))
- Access myOn (<https://www.myon.co.uk/login/>) for online texts and newspaper articles
- Become a member of the local library at Lasswade High School - you can then also access reading materials through Borrowbox



# Questions?

At Burnbrae PS we are always happy to receive and answer questions to help support the progress of our learners. AR is one part of how we teach and support reading at Burnbrae. If you require any further information, please do not hesitate to us through the school email address:

[burnbrae.ps@midlothian.gov.uk](mailto:burnbrae.ps@midlothian.gov.uk)

