



Welcome to Burnbrae Primary



23/24

welcome

Linda Clarkson
Head Teacher

A warm welcome to all families with a child starting Primary One in August 2023. We look forward to getting to know you and your child next session. Across both our buildings we have high aspirations for all our learners who are encouraged to be ready, respectful and safe through our school vision of playing, growing and learning together. We work closely with ELC settings to ensure a smooth transition for all children.

If you have any questions, please do not hesitate to contact me by email or telephone -

Burnbrae.ps@midlothian.gov.uk

0131 271 4605





Katherine Jamil DHT, Amy Richmond DHT, Linda Clarkson HT and Kerry Knight DHT



Principal Teacher Team



Claire Mitchell, Sarah Corrieri, Lynsey Clements and Joanna Hames



Primary One Team



Ines Lopez , Claire Mitchell, Marie Hamlyn, Shona Bryce and Jennifer McLaren

Ines Lopez will be based at Burnbrae Early within our Complex Needs Provision



Admin Team





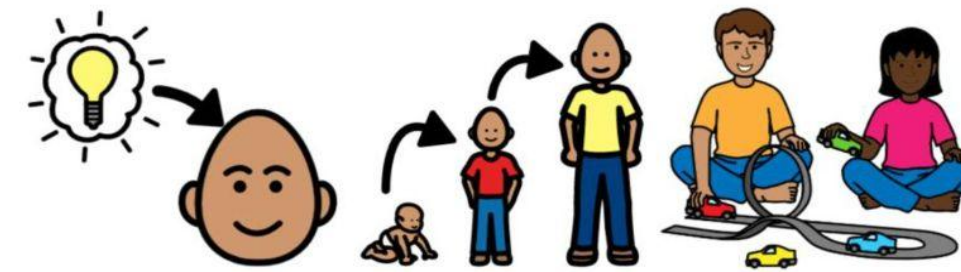
Our Vision

- Burnbrae plays together, grows together, learns together
- Children are encouraged to behave in a way which ensures every learner is Ready to learn, Respectful and Safe. Every class has a charter setting out the standards agreed and also a Board of Recognition to encourage children to aspire to be their best.
- We are committed to working together with families and other agencies to ensure all learners can be all they can be.



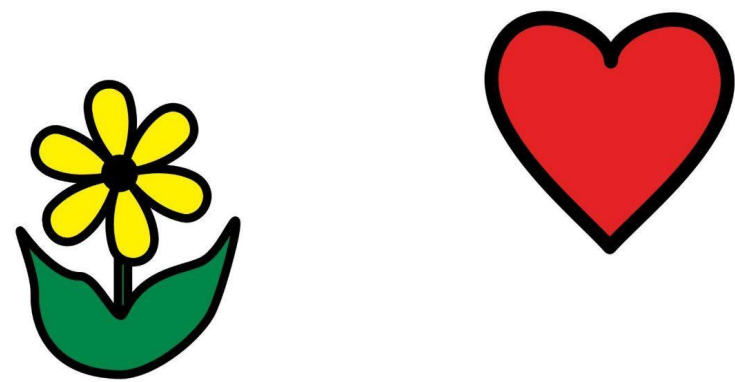
At Burnbrae

we learn, grow and play

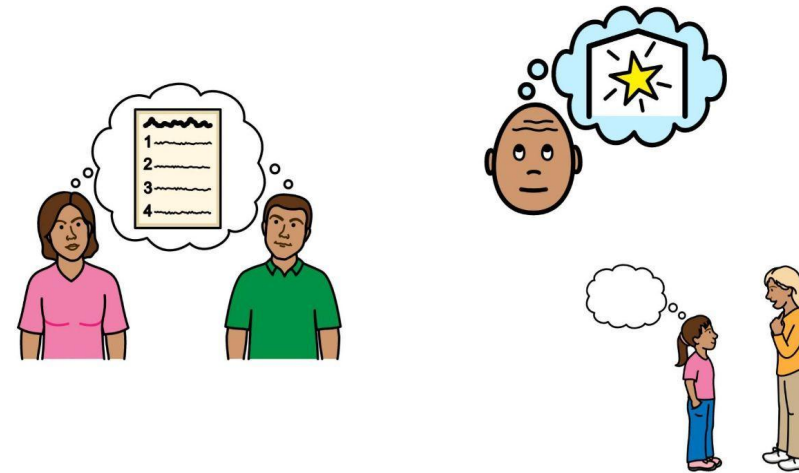


together

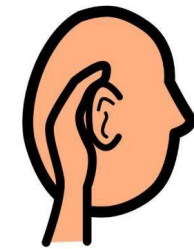
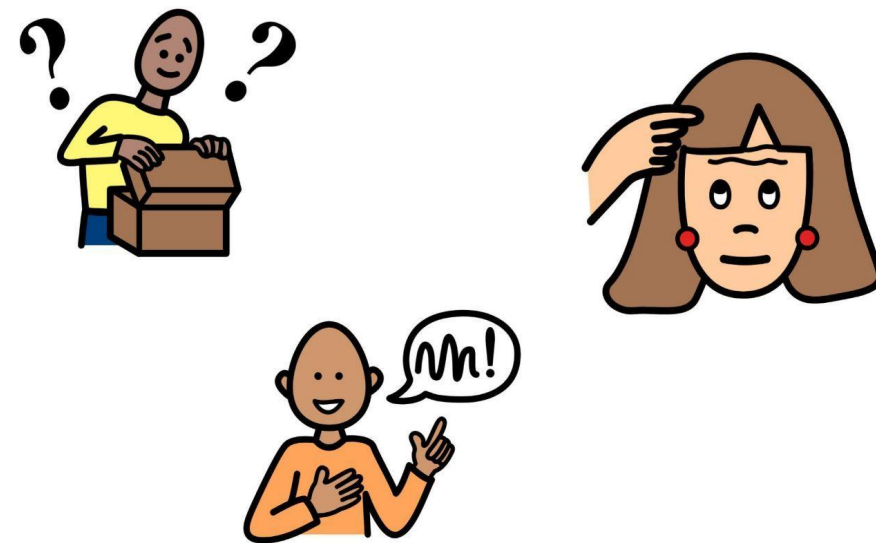




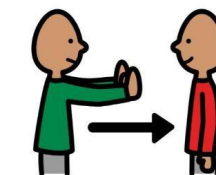
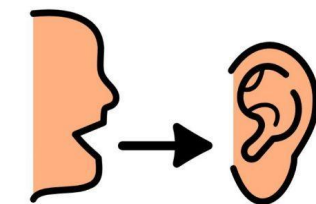
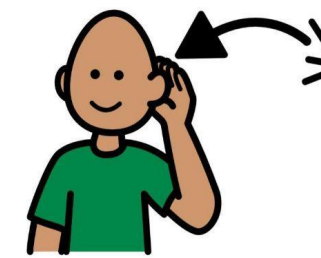
Kindness



Curiosity



Respect





Burnbrae Primary Parent/Carer Handbook

2022/23

Tel - 0131 2714605

Email - burnbrae.ps@midlothian.gov.uk



<https://burnbrae.mgfl.net/our-handbook/>



Burnbrae Website

We have an ELC – P1 transition page which contains the following -

- Mid Mouse stories and information
Virtual tour - **new version coming soon**
- Top tips for families
- Link to the school handbook
- Transition story list
- Transition visit dates - Families with a child joining Complex Needs Provision (CN) will be contacted individually with further transition information

[ELC – P1 Transition | Burnbrae Primary School](#)
[\(mgfl.net\)](#)



Curriculum for Excellence in a Nutshell

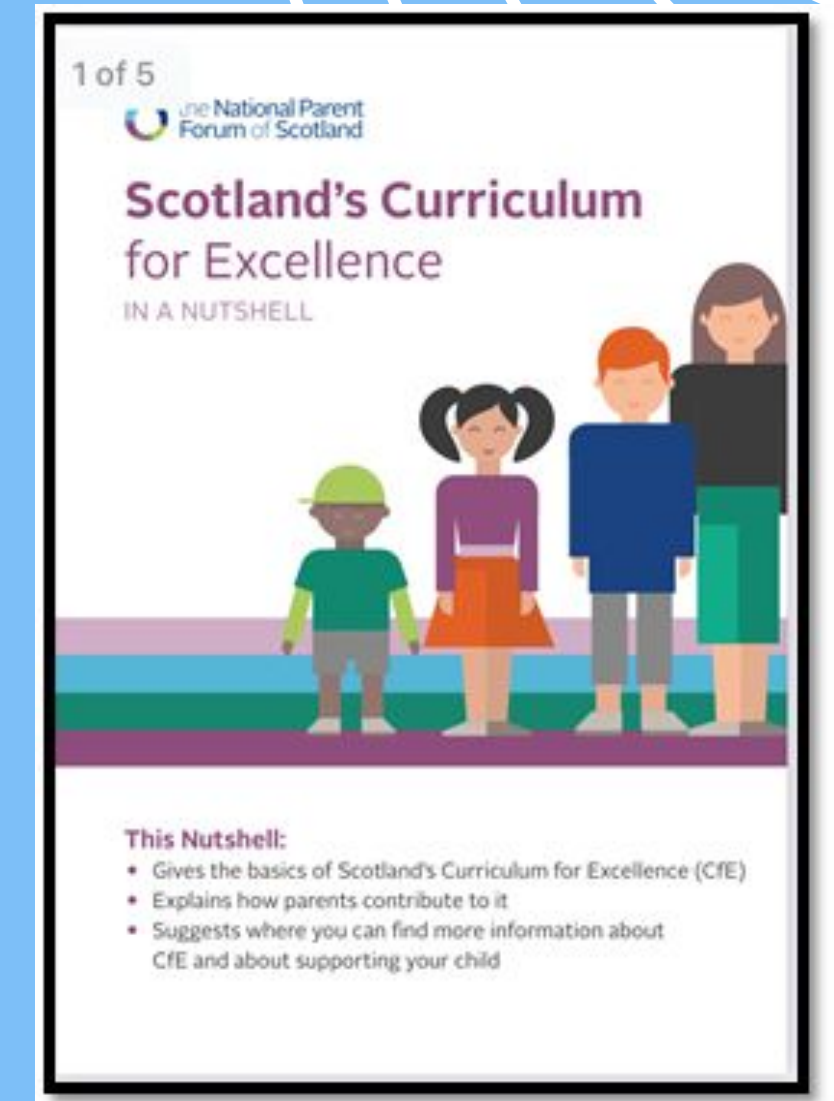
Curriculum for Excellence

Scotland's curriculum – Curriculum for Excellence (CfE) – helps our children and young people gain the knowledge, skills and attributes needed for life in the 21st century

Curriculum for Excellence places learners at the heart of education. At its centre are four fundamental capacities. These capacities reflect and recognise the lifelong nature of education and learning. The four capacities are aimed at helping children and young people to become:

- Successful learners
- Confident individuals
- Responsible citizens
- Effective contributors

Further information can be found here
- <https://burnbrae.mgfl.net/curriculum/>



Developing skills through play

I will learn to read
but first I need to...

Rhyme
I need to recognise the sounds that letters make before I can read

Look at books
I need to be interested in words and books to read

Track
I need to follow objects with my eyes to read

Talk
I need an extensive vocabulary to understand what I read

Do puzzles
I need to differentiate size, shapes, lines and directions to read

Build
I need to use my fingers and hands independently to hold books and turn pages

... and I need someone to read to me every day!

© I Will Learn Poster Series
www.bookoozle.com.au

1 of 2

Bookoozle

TESTING PROPERTIES
LEADERSHIP SHARING SPACE
NEGOTIATING
EXERCISE EXPLORATION **SPACE TO PLAY** TURN-TAKING FORAGING
HAPPINESS MAKING USE OF WHAT YOUVE GOT
BEING IN CONTROL
BEING AWAY FROM ADULTS
OVERCOMING FEAR **FREEDOM** WORKING TOGETHER
BEING CREATIVE **RISK TAKING**
MANIPULATING THE ENVIRONMENT
COMMUNICATION **PROBLEM SOLVING**
BUILDING EMOTIONAL RESILIENCE
PHYSICAL DEVELOPMENT **BUILDING COMMUNITY**
DEVELOPING/STRENGTHENING NEURAL PATHWAYS
EXPERIMENTING WITH SCIENTIFIC CONCEPTS



Importance of Play

...play at this time is not trivial, it is highly serious and of deep significance
(Froebel, 1826)

- Curriculum for Excellence (2007) gives prominence to play, particularly across the early level and the transition between ELC and primary school. This transition will likely be smoother for the child if play remains and continues as the main vehicle for their early learning in P1 and beyond.
- Play is an intrinsic part of human nature and development. The essential role of play is well documented. Through play a child develops their cognitive, social, emotional and physical capacities
- Through play, the child can learn to answer their own questions, learn new skills and learn to work collaboratively with other children or adults. Realising the Ambition



Parent Pay

Online payments for schools and early years

- We use the ParentPay online payments system at Burnbrae Primary School, You can use ParentPay to pay securely online by debit or credit card. You can pay for a large range of school services and activities including trips, milk and school dinners. You will be given an activation letter when your child is fully enrolled into the school.



ParentPay
COUNT ON US

Lunch



- All P1 to P5 pupils are entitled to a free school meal in all schools.
-

The dinner hall is now cashless and children cannot use money at lunch time. Money must be taken to the office first thing in the morning to be added to each child's account.

A menu is issued to parents regularly. Primary 1 — 3 do not automatically receive free milk

If you are eligible for or are in receipt of Free School Meals, Milk and Clothing grant, you should already have a form from Midlothian council to fill in and return to them. If you do not have this form please contact the school

https://www.midlothian.gov.uk/info/855/school_meals/13/school_lunches



Uniform

Below is a list of clothing we promote:



Burnbrae Primary School uniform can be purchased from Border Embroideries via the online store

– <https://www.border-embroideries.co.uk/>

Item	Colour	Colour P7
Sweatshirt/Cardigan	Royal Blue (P1-P6)	P7 Hoodies - Various Colours
Shirt Polo Shirt	White or Red	White or Red
Skirt, Trousers, Pinafore	Navy, Black or Grey	Navy , Black or Grey
School Dresses	Red or Blue Gingham	
Joggers (No Logos)	Plain Black (P1-P7)	Grey (P7)
Leggings	Black	Black
Tie	Blue ,Black and White	Blue ,Black and White
Shoes/Trainers –No designer shoes please	Black	Black

School Uniform Bank

The Parent Council have set up and continue to run a uniform bank in the school where you can exchange items of uniform as your child grows. We always have a stock of school sweatshirts, hoodies, polo shirts, trousers and skirts in various sizes.





Please label all clothing with your child's name.

The Authority operates a scheme of clothing grants to assist parents in ensuring that a pupil is sufficiently and suitably clad to take full advantage of the education provided. Families in receipt of Income-based Job Seekers allowance, on Income Support or Child Tax Credit but not Working Tax Credit (subject to a maximum annual income), both maximum Child Tax Credit and maximum Working Tax Credit (subject to a maximum annual income) or support under Part VI or the Immigration and Asylum Act 1999 will automatically qualify for such a scheme. Other cases will be determined according to the personal circumstances of the family. Parents who wish to apply for the scheme should complete an application form which is available from this school or the Education and Children's Services Division, Fairfield House, 8 Lothian Road, Dalkeith EH22 3ZG.

[https://www.midlothian.gov.uk/info/855/school meals/117/free school meals and clothing gra](https://www.midlothian.gov.uk/info/855/school%20meals/117/free%20school%20meals%20and%20clothing%20gra)



The School Day



	Monday- Thursday		Friday	
Burnbrae Primary	8:50	3:15	8:50	12:25
CN	8:50 - 9:00	3:00	9:00	12:00

The First Week

Wednesday 16th August: 1 hour morning session

Thursday 17th August: 9am - 12.15pm including lunch

Friday 18th August: 8.50-12.25pm

Monday 21st August: times as above.

Parent Council

Burnbrae has a parent group called the **Burnbrae Primary School Parent Council**. The membership of which comprises parents and other interested parties within the community. The group meet twice a term with the main aim of fund raising for the school.

burnbraeparentcouncil@gmail.com



Welcome to Burnbrae Parent Council

Support our school through
attending events, volunteering,
fundraising and more!



www.burnbraeparentcouncil.com



Keep in Touch

The school App is our main platform for sharing school newsletters and information. Information will always be posted to the school app in the first instance. Please contact the school office if you require support to download the app. You can download a free copy of our school app from the android or apple app stores.

Primary One children have access to a Seesaw account to share learning.



To allow us to use Seesaw we require your permission to create an account for your child. Children who attend Burnbrae ELC already have permission to use Seesaw and do not need to complete the link again.

<https://forms.gle/3Kc5nkscuKf7WNdT6>

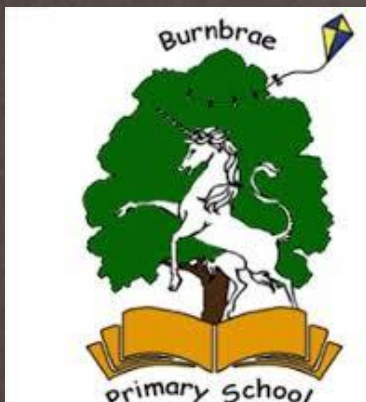
1:1 Devices

All children at Burnbrae have access to a 1:1 device which they can take home to support learning.

More information can be found on the links below -

<https://equipped.midlothian.education/aqs/parents-carers/>

<https://equipped.midlothian.education/>



How you can help

Please:

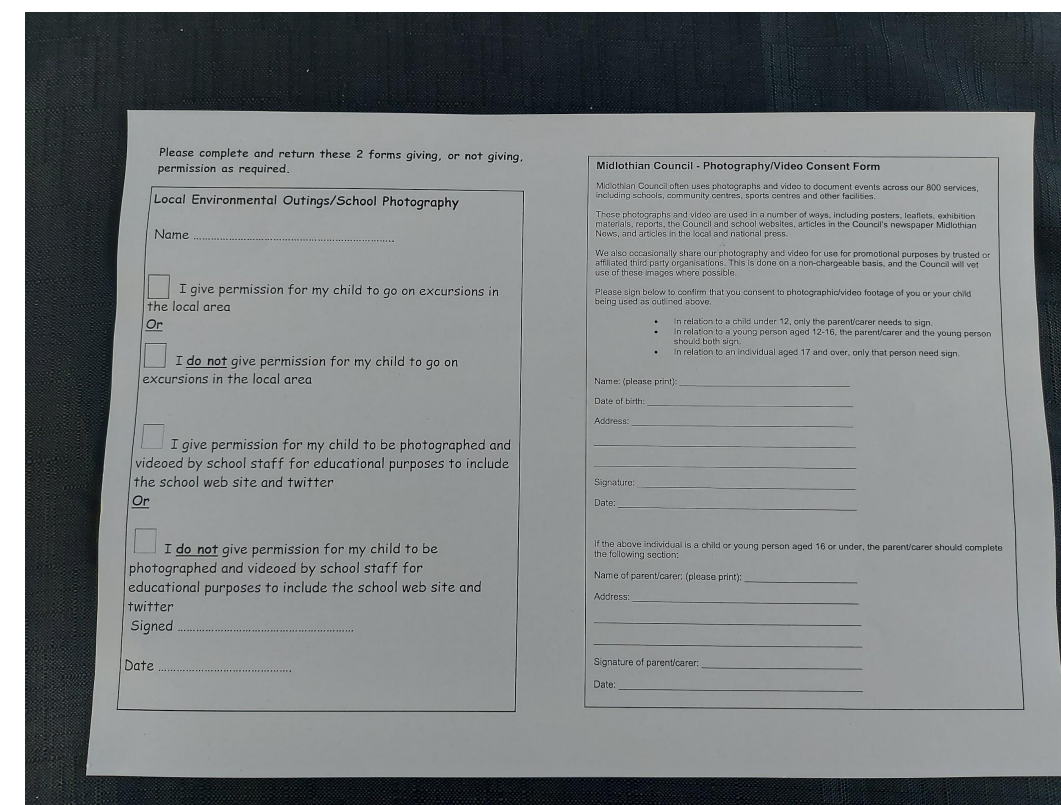
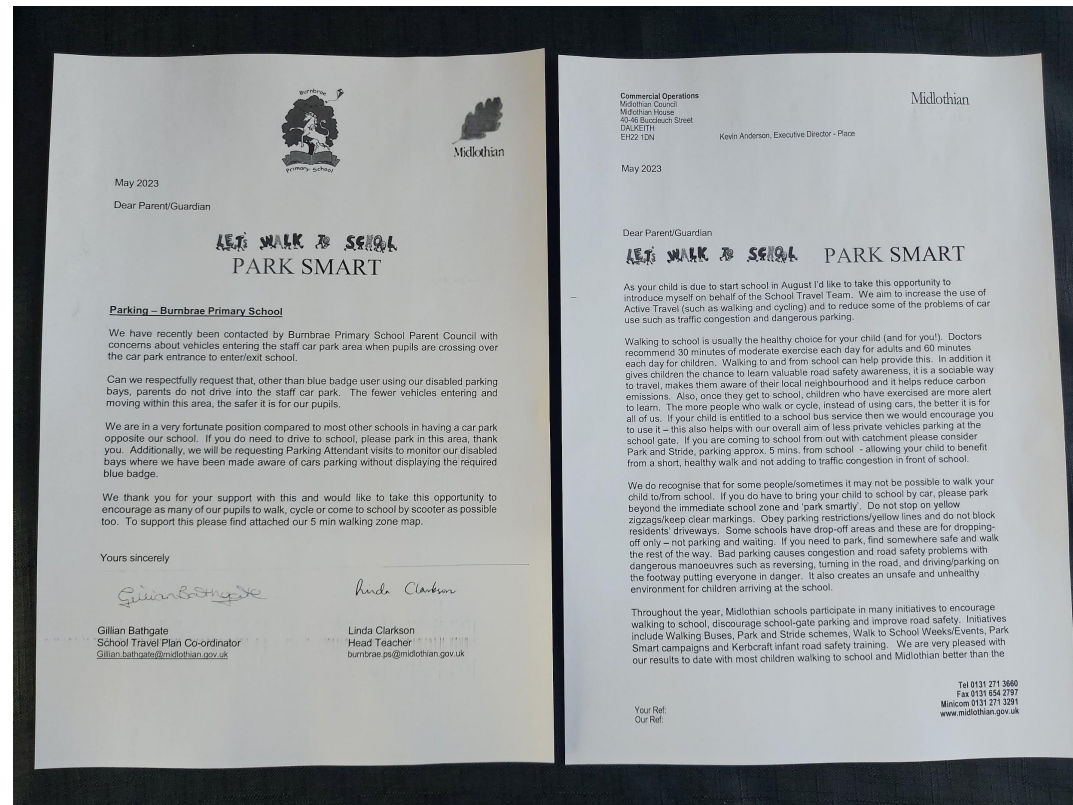
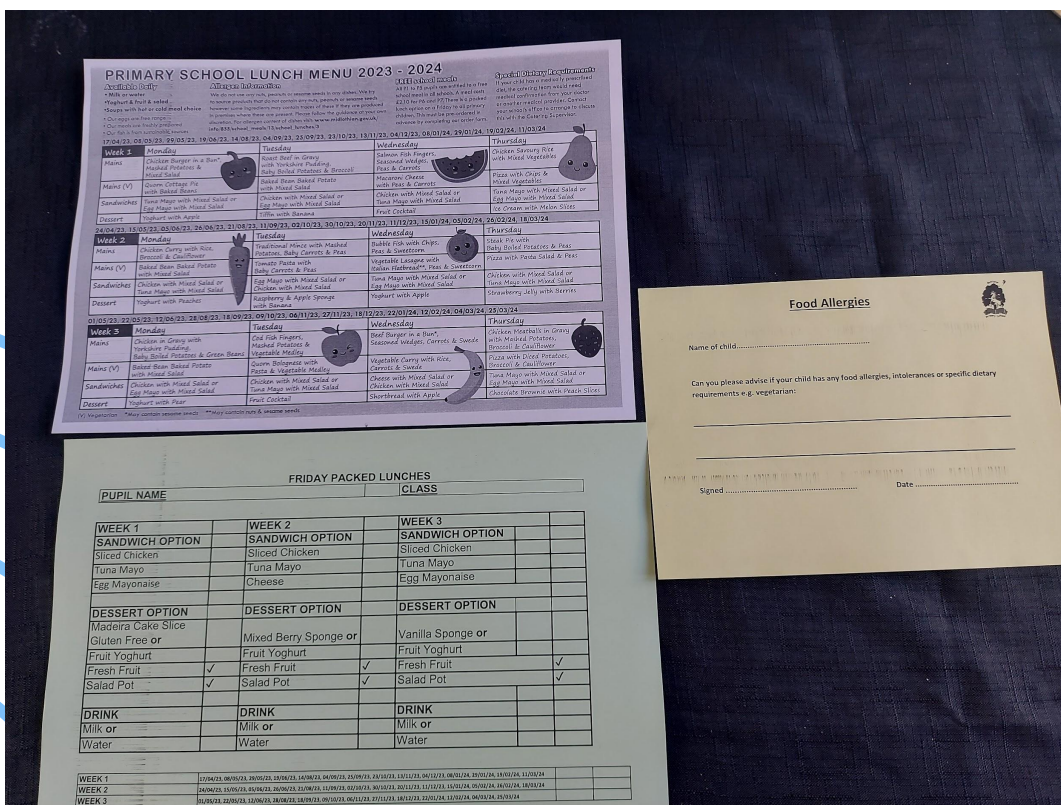
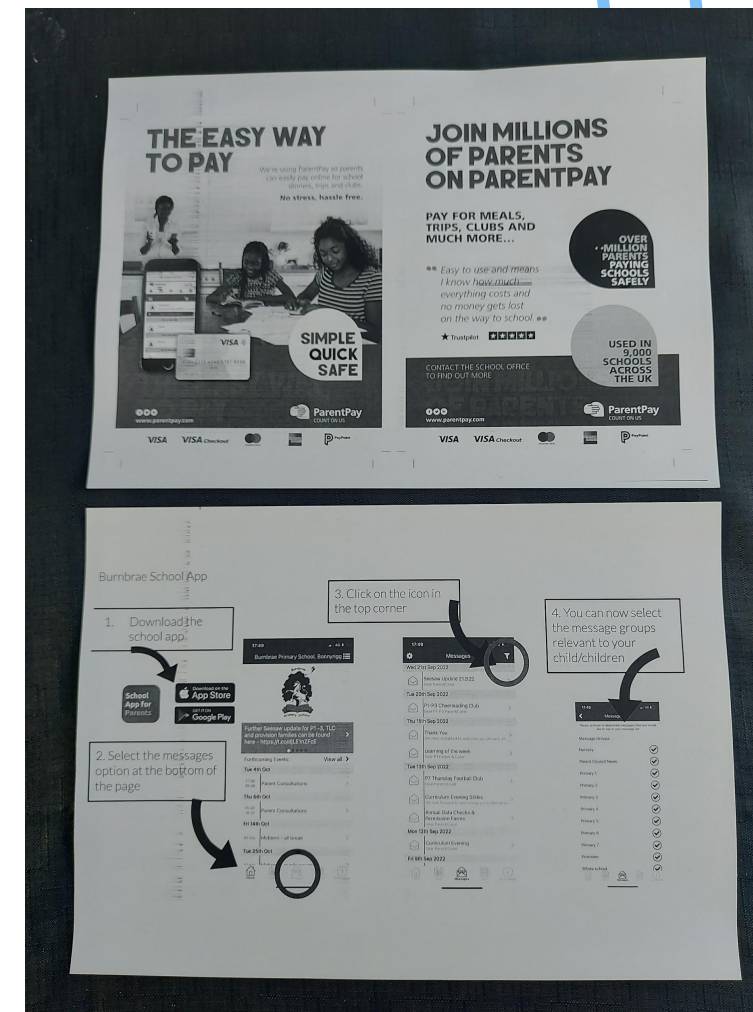
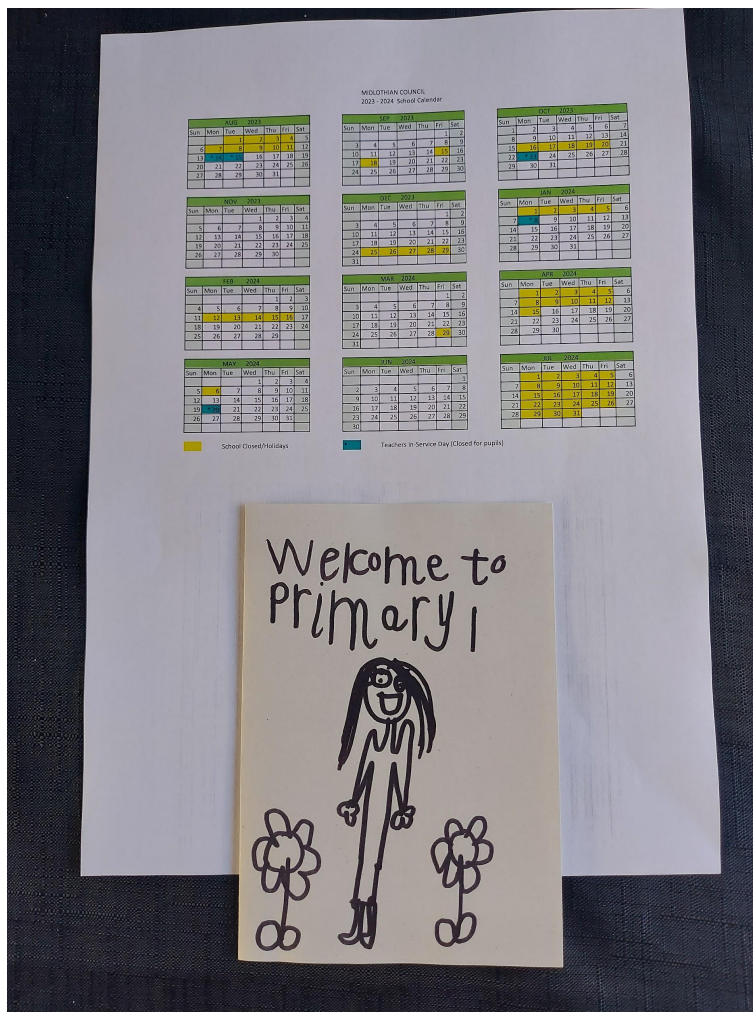
- o Contact the school office via email if you need to make an appointment or ask any questions
- o Ask your child about homework and their learning
- o Encourage your child to organise themselves
- o Ensure all clothing is clearly labelled
- o Ensure no personal belongings are brought from home except for lunch boxes, snacks and water bottles
- o Download the school app
- o Bring a Bear on the first day of school





The paperwork

Please complete the Friday lunch choice, Food Allergies and Local Environment/Photo Permissions forms and return to school.



We look forward to seeing the children tomorrow for
a visit to the classroom.



Group 1 12.30-1pm
Group 2 1.15-1.45pm
Group 3 2-2.30pm

You are invited to join us on Friday 16th June,
9.30am-10.30am to visit P1 and meet the P1 team.



We will share further curriculum information on the
16th June.



Thank you for visiting our school, we would appreciate five minutes of your time to capture your feedback and suggestions. Please scan the code below to complete our short feedback form.

Thank you
Team Burnbrae



<https://forms.gle/cLsoQejqDnvWv1yS8>